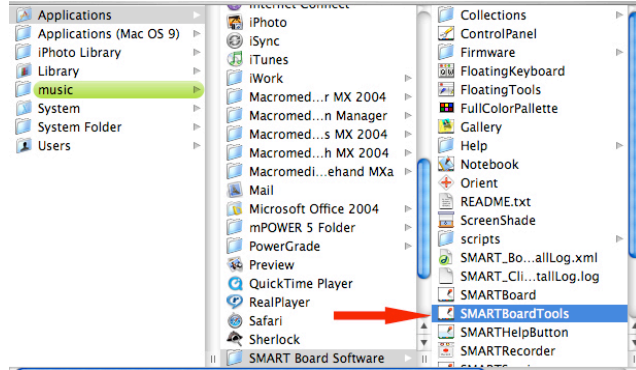




<http://www.lmsdscitech.org/pages/presentation/presentation.htm>

Overview of the SmartBoard Tools



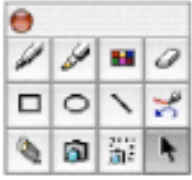

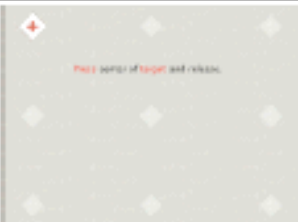
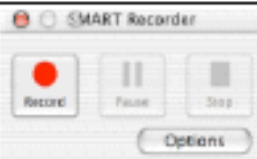

The SmartBoard Tools are an integral part to the Airliner and they allow you to do a variety of features. To access the SmartBoard Tools go to the Mac Hard Drive and navigate to the applications folder and locate the folder entitled SMART Board Software. Next you will find the Application SmartBoard Tools (see image on right).



To make it easier to locate these tools in the future, you should add them to your dock. The future tutorials will reference the SmartBoard Tools in a users dock.



There are 7 different tools that you can use with your airliner. Below is an overview of the tools. More detailed directions on each tool can be located on the lmsdscitech.org web site.

Selecting...	Opens...	Use this tool to...
SMART Notebook™		Write and draw on the board, capture notes and diagrams, edit these notes, and create additional whiteboard space.
SMART Keyboard		Type or edit text in any application without leaving the whiteboard.
Floating Tools		Access the pen tool, highlighter, eraser, screen capture and other key functions.
Control Panel		Configure a variety of software and hardware options. From here, you can administer SMART Board Settings, orient your SMART Board, personalize the Pen Tray, and connect to a new SMART Board.
Orient		Orient your SMART Board interactive whiteboard. Orientation ensures your touch is registered correctly when you are using the interactive whiteboard. It may help to view the orientation process as "fine-tuning" your interactive whiteboard.
SMART Recorder		Record everything that happens on the interactive whiteboard, regardless of which application you're using. SMART Recorder also allows you to record audio through a microphone and automatically combine audio and data into one file for playback on any computer.
Spotlight		Highlight an area of your screen. Select the Menu button to change the shape of your spotlight, set the transparency level of the shaded area or exit the Spotlight view.