



<http://www.lmsdscitech.org/pages/presentation/presentation.htm>

Airliner Connection Directions for Windows Computers

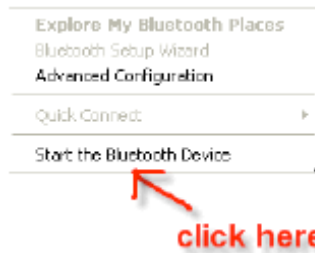
1. Plug the Bluetooth device into the correct USB port in your computer.



2. On your computer, go to the bottom right menu in the system tray and right click on the Bluetooth icon.



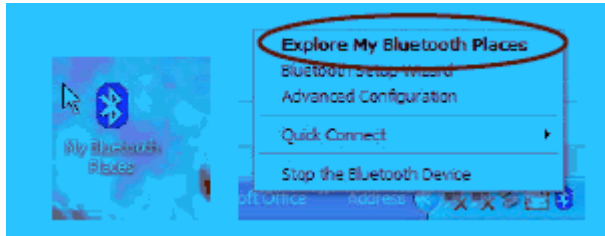
3. On your right click screen choose "Start Bluetooth Device"



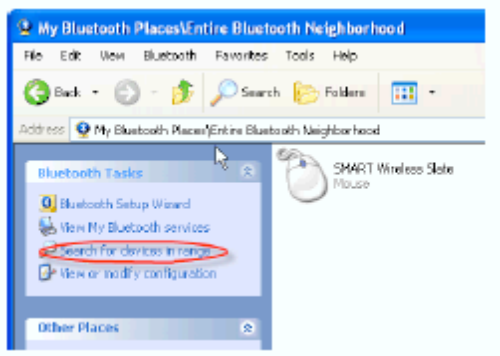
4. On the Airliner, click the power button in the upper left corner and the black "connect" button on the back of the airliner. The Airliner power button should begin to blink.



5. Go to My Bluetooth places on your desktop and double click OR Right click on the Bluetooth icon in the system tray and choose “Explore My Bluetooth Places”.

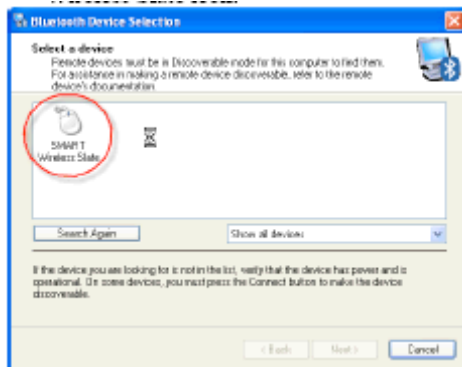


6. This screen will appear. Click on “Search for devices in range.”

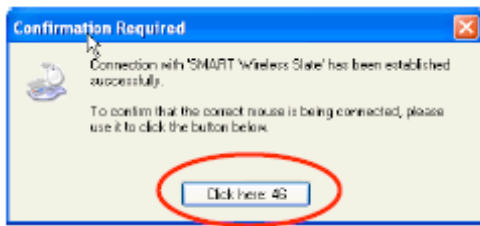


7. Double click on the SMART Wireless Slate , and then YES.

8. Another window will come up that looks like this one. Click on the SMART Wireless Slate icon.



9. A second window will automatically come up that looks like this. You will need to click on the “Click here” button to confirm the connection



10. You can close all the other windows and you are connected and ready to go!